



VanoFlow[®]-EX0-01

EV Isolation Cassette

Quick Guide

Doc Num: QG-VF-EX0-01 Rev A

Materials

Materials provided	Qty
VanoFlow-EXO-01 cassette	1
NFC tags	1
Sample and buffer column set	1

Materials Required but Not Provided (Each Run)	Qty
PBS or TBS buffer	45 mL
70–75% Ethanol or Isopropyl alcohol	20 mL
DI water or distill water	20 mL
10 or 15ml conical tube	1

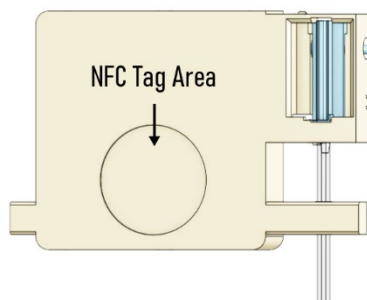
Software Requirement

- Version **V3.5.4** or later for instrument with serial number (last 4 digit) \leq 0030
- Version **V5.5.4** or later for instrument with serial number (last 4 digit) \geq 0031
- Protocol Profile **V2.6.2** or later

Operating Procedure

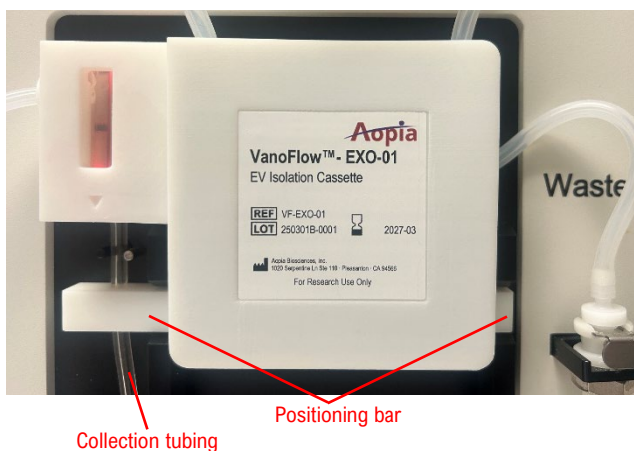
Attaching NFC Tag

- A valid near-field communication (NFC) tag (**VF-EXO-01**) must be attached to the cassette before use.
- Peel off the protective film and attach the NFC tag to the designated area on the back of the cassette, as indicated in the schematic.
- Each NFC tag is valid for one (1) processing cycle.

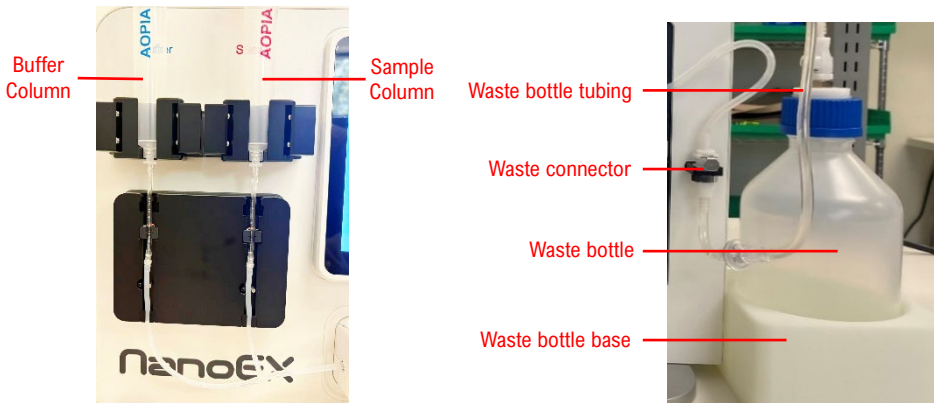


Cassette Installation

- Install the **Magnetic VanoFlow-EXO-01 Cassette** by placing the **Positioning Bars** inside the brackets and pushing against the panel.
- A **Green** cassette name (**VanoFlow-EXO-01**) should appear on the top-right corner of the screen. Unknown, Used, or Expired cassette will appear in **Red** Text.




- Install **Sample and Buffer Columns** (Ensure that the removable Column Adapters are installed).
- Place the **Waste Bottle** on the right side of the main system. Securely tighten the bottle cap. Connect the **Waste Bottle Tubing** to the bottom of the **Waste Connector** on the main system.



- Install **Feeding Tubing, Cassette Top Tubing, and Column Tubing**. **DO NOT** add sample or buffer to the columns at this step

Automated Processing


- On the **Home** screen, click **Set Up**, then select the processing mode. The **“Standard Mode”** is always recommended for most sample types.
- Follow the on-screen instructions to complete the required checkpoints. **Verify** that the pinch valve has **securely clamped** the tubing.
- When prompted, input sample name and volume.
- Add **sample** and **buffer (45 mL)** to the corresponding columns.
- On the main processing screen, press the () button to begin processing.

Reminder:

-The system performs automated pre-checks during the initial **~10 minutes** before sample loading.

-Monitor the system during this period. After sample loading begins, the run typically proceeds without further user intervention.

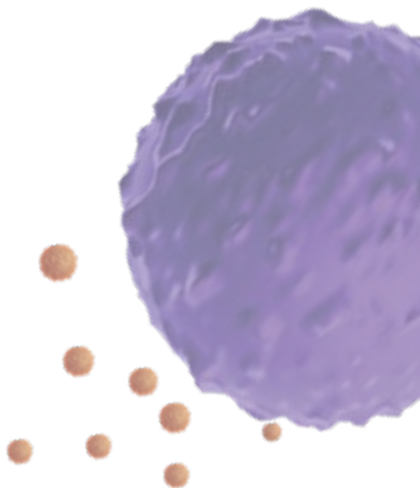
Collection

- After processing is completed, click the **“OK”** button on the pop-up window to return to home screen.
- On the Home screen, click **“Collect”** and follow the on-screen instructions.
- On the main processing screen, press the () button to begin collection.

Post-processing Procedures

- After collection is completed, click the **“Release Cassette”** button (now activated), remove and discard cassette and columns.
- Flush the **Waste Bottle Tubing** through the Waste Bottle Connector using the Rinsing Syringe (provided) with 20mL Distilled H₂O followed by 20ml 70%-75% Isopropyl alcohol or Ethanol and then push air through the tubing.

For the complete User Manual, scan the QR code below.



Aopia Biosciences, Inc.
1020 Serpentine Ln Ste 110, Pleasanton, CA 94566
www.aopiabio.com
info@aopiabio.com